



# Mapper, Workbench & Modeler™

Integrated Productivity Toolkit

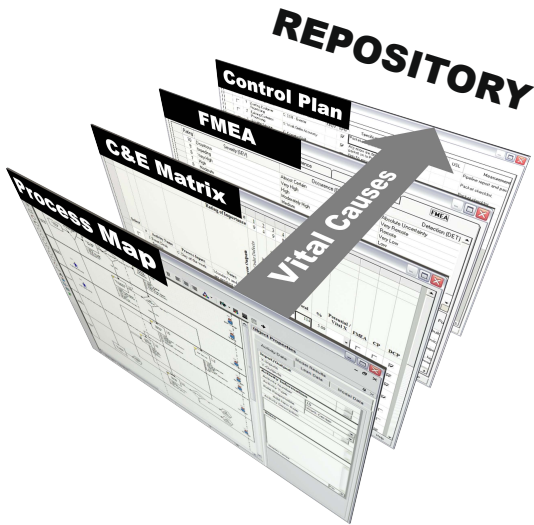
Get better results **faster** with the only software toolkit that integrates data between tools – and **automatically populates** the data into a central repository for knowledge sharing.

SigmaFlow uniquely brings you process analysis, statistical, Lean Six Sigma tools, and simulation in one software suite. Select the level of functionality needed.

## Process Mapping & Analysis

Brainstorm, Process Map and perform Value Added analysis with **one** easy-to-use software application.

- Provide gap analysis between “As-Is” and “To-Be” and prioritize improvement opportunities
- Improve collaboration by capturing and displaying metrics on the process map
- Rank projects by ease of completion versus overall desirability using Pareto and X-Y charts
- Streamline creation of Process Maps, Fishbone and Hierarchy with diagram productivity tools



## Lean Six Sigma Workflow

Data management is the primary challenge of Six Sigma projects... especially those employing a wide variety of tools. SigmaFlow provides the **ONLY** software containing a Vital Cause Management system.

**Visibility** into how inputs flow between the individual Six Sigma tools

- Ensure that Potential Vital Causes haven't slipped through the cracks
- No time wasted on non-Vital Causes

**Maintains history** and critical thinking from start to finish

- Automatically generates Vital Cause Dashboard
- Simplifies project review

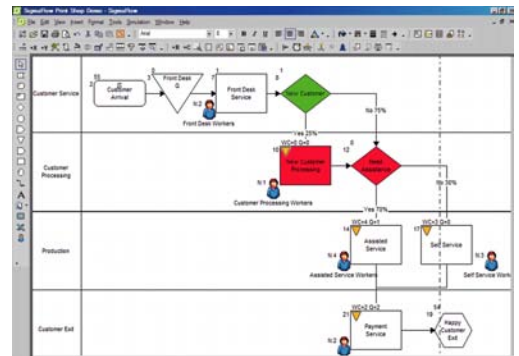
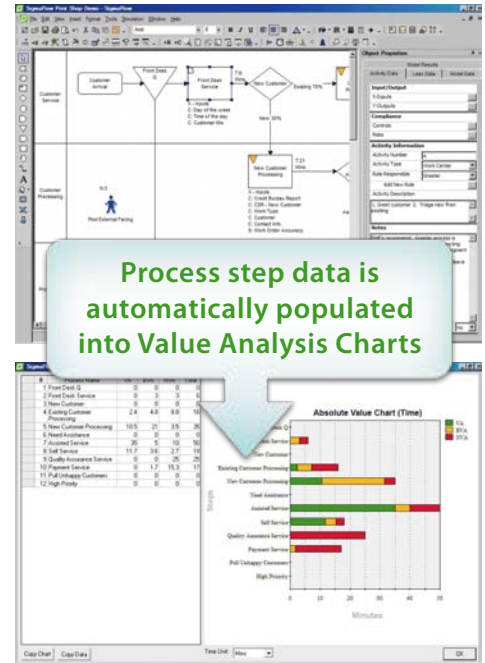
**Auto-populates** inputs between Six Sigma tools

- Reduces errors and inefficiencies because tools share one instance of data
- Easy to use** – includes "how-to" movies

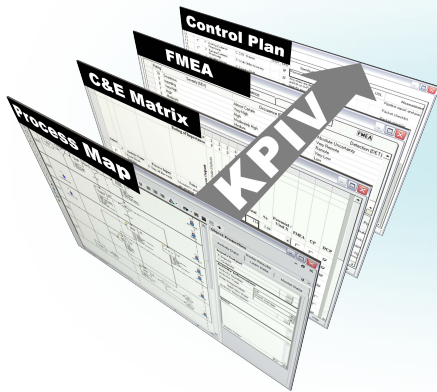
## Discrete Event Simulation

Enables testing and experimenting in a risk free environment at virtually no cost and in a fraction of the time otherwise required.

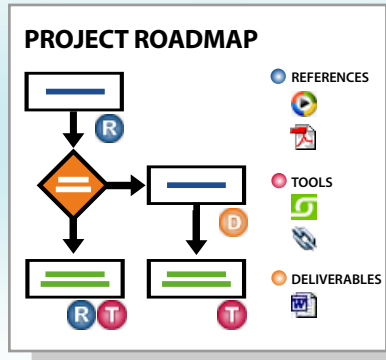
- Simulate process maps created in SigmaFlow's **Mapper™** & **Workbench™** with one click of a mouse
- Study process designs prior to piloting
- Eliminate unforeseen barriers, bottlenecks and design flaws
- Optimize resource allocation and priority
- Develop activity-based costing models with real-world variability



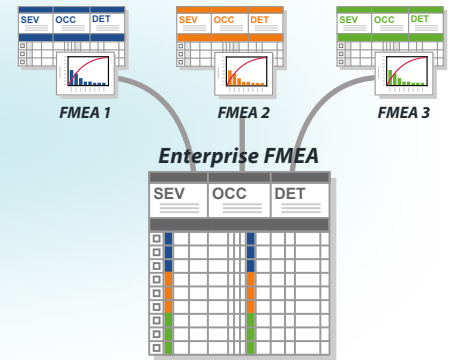
The power of SigmaFlow's integrated tools can be extended from the individual user to project teams and the entire enterprise.



Data Integration



Consistency



Knowledge Sharing

### Integrated Tools

Rework is minimized and anomalies are easily identified through our **integration** of input and output data between tools. **Key Process Input Variables** are managed from identification to control. This ensures KPIVs don't slip through the cracks or just appear without context on Control Plans.

### Consistent Use of Tools

Improve project **consistency**, learning curves and self-sufficiency by powering your tools with **SigmaFlow Coach™**. **Coach** uses a **graphical roadmap** as the basis for a project workspace. The roadmap answers what to do next and ensures tools are applied in a defined sequence and sufficient level of detail. Roadmaps can be created or purchased for *any* procedure-based methodology and/or to replicate a best practice project.

### Sharing of Data

**SigmaFlow Insights™** provides comprehensive **knowledge sharing** and portfolio reporting. This enterprise information and tools **Repository** aggregates your process, project and risk data. Standardized project files enable organizations to create enterprise process models. Quality data can be combined to create enterprise FMEA and Control Plans. Compliance data can be combined to create an enterprise Control and Risk Matrix.

“ **Best six sigma tool belt on the market.** The integration capability and ease of use truly optimizes your improvement endeavors. It has been well received and has kick-started our global initiative. ”

Robert Hutcherson, Director of Quality & Six Sigma Deployment Champion, Convergys Corporation



### Statistics Included

SigmaFlow toolkits include a Statistics module at no additional fee. A familiar spreadsheet-based approach to statistical analysis makes the software easy to learn and use on a daily basis while still providing all the functionality needed for Six Sigma and other process improvement efforts. An upgrade is available for full Excel 2007 support.

### What tools do you need?

	Mapper	Workbench	Modeler
Process Analysis	✓	✓	✓
Statistics	✓	✓	✓
Six Sigma		✓	✓
Simulation			✓

SigmaFlow's software delivers standards, consistency, and productivity for company-wide process management, project management, project execution and governance.

T 800.663.0585 E [moreinfo@sigmaflow.com](mailto:moreinfo@sigmaflow.com) W [www.sigmaflow.com/tools](http://www.sigmaflow.com/tools)

